

PARTS LIST

ITEM	QTY	PART NUMBER	MATERIAL	DESCRIPTION
1	1	BASE	CAST IRON	
2	1	SLIDING JAW	CAST IRON	
3	2	JAW PLATE	SAE 3140	
4	1	WISE SCREW	SAE 3140	
5	1	HANDLE ROD	COLD ROLLED STEEL	
6	2	HANDLE BALL	SAE 1020	
7	1	COLLAR	SAE1020	
8	1	SPECIAL KEY	SAE1020	
9	2	SLIDE KEY	SAE1020	
10	2	SET SCREW	SAE 1016	
11	4	FLAT HEAD MACHINE SCREW	TYPICAL	1/4"
12	2	TAPER PIN	TYPICAL	#000 TAPER PIN

LEGEND:

- ∅ DIAMETER
- R RADIUS
- ° DEGREES
- ┌┐ COUNTERBORE
- ∨ COUNTERSINK
- ∇ DEPTH

MASTER ASSEMBLY
SCALE 1 : 1

GENERAL NOTES:

ALL FILLETS AND ROUNDS ARE 1/8, UNLESS OTHERWISE SPECIFIED



DIGITAL DESIGN
GRAPHICS
TECHNOLOGY

WWW.DDGT.NET



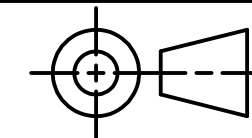
Ebeling Engineering

Nicholas Ebeling
Drafter

707-333-7096

n.b.ebeling@gmail.com

www.ddgt.net/StudentPages/nebeling



TOLERANCES UNLESS SPECIFIED:

DECIMAL INCHES:

X = ±.020

XX = ±.010

XXX = ±.005

FRACTIONAL ±1/64"

ANGLES ±1 DEGREE

SURFACES 32 ✓

COURSE: DDGT 240

INVENTOR DRAWING NAME:
MACHINE VISE

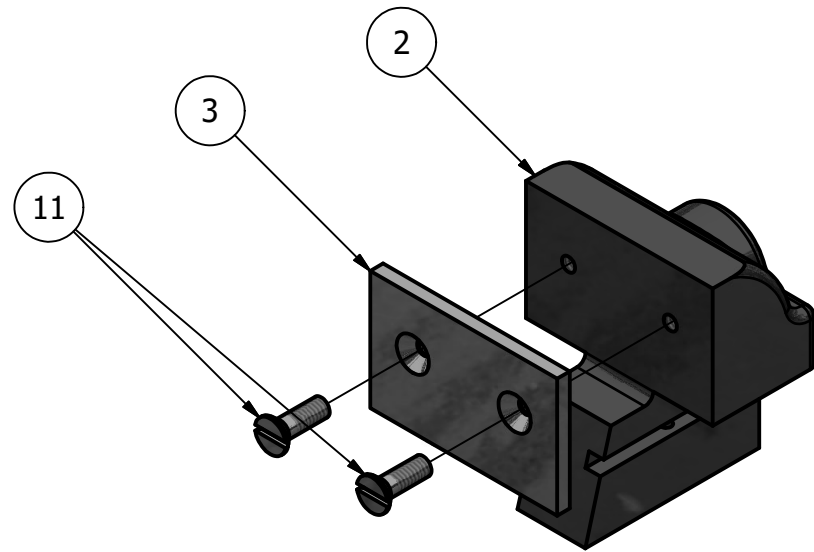
FIG #: 14-71

DRAFTER: N. EBELING

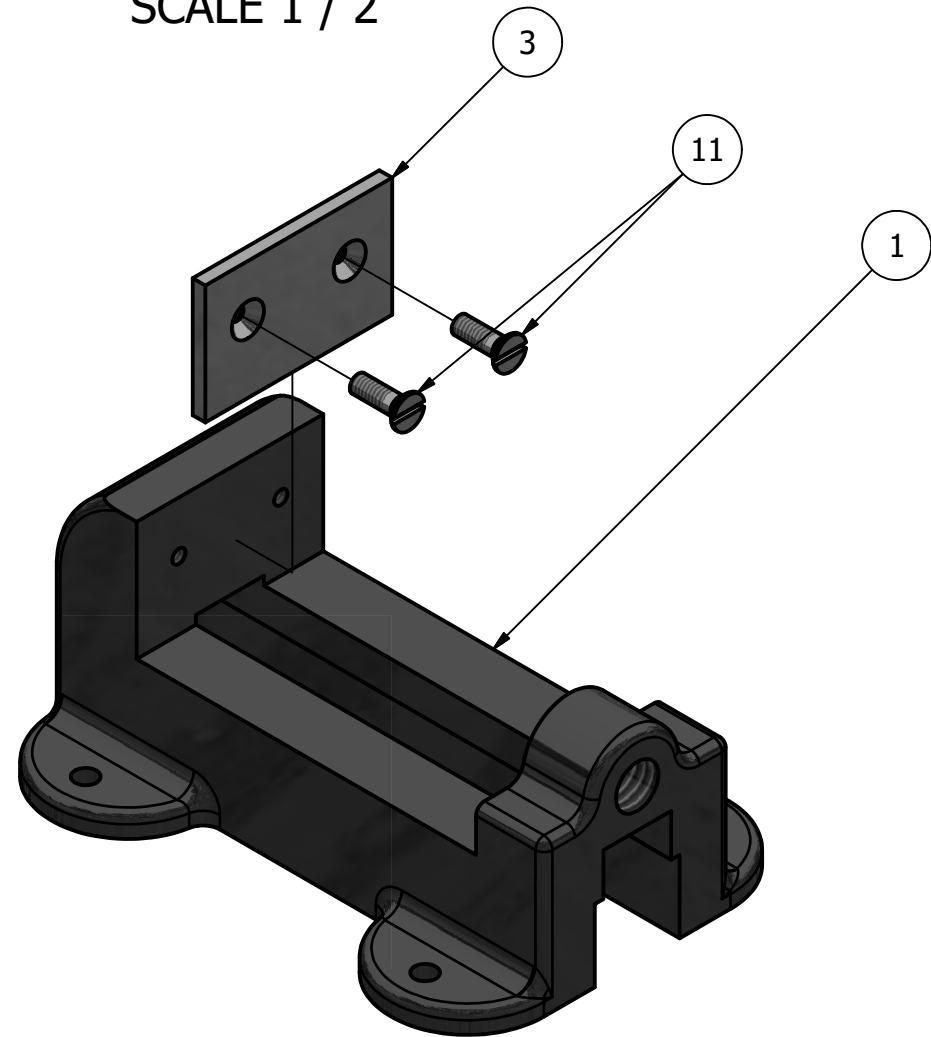
DATE: 10/1/2020

SCALE: AS NOTED

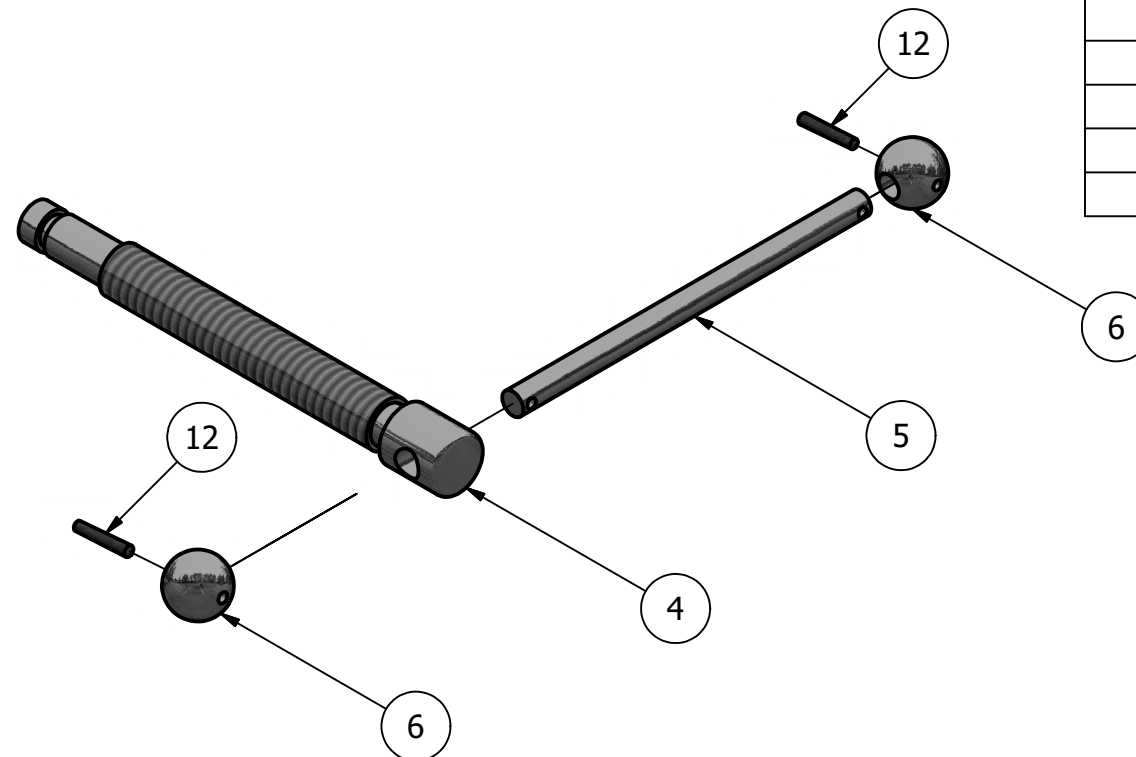
PAGE #: 1 OF 5



STEP 1
SCALE 1 / 2



STEP 2
SCALE 1 / 2



STEP 3
SCALE 1 / 2

PARTS LIST		
ITEM	QTY	PART NUMBER
1	1	BASE
2	1	SLIDING JAW
3	2	JAW PLATE
4	1	WISE SCREW
5	1	HANDLE ROD
6	2	HANDLE BALL
7	1	COLLAR
8	1	SPECIAL KEY
9	2	SLIDE KEY
10	2	SET SCREW
11	4	FLAT HEAD MACHINE SCREW
12	2	TAPER PIN

LEGEND:

- ∅ DIAMETER
- R RADIUS
- ° DEGREES
- COUNTERBORE
- ∨ COUNTERSINK
- ▽ DEPTH



DIGITAL DESIGN
GRAPHICS
TECHNOLOGY

WWW.DDGT.NET



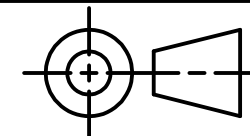
Ebeling Engineering

Nicholas Ebeling
Drafter

707-333-7096

n.b.ebeling@gmail.com

www.ddgt.net/StudentPages/nebeling



TOLERANCES UNLESS SPECIFIED:

DECIMAL INCHES:

X = ±.020

XX = ±.010

XXX = ±.005

FRACTIONAL ±1/64"

ANGLES ±1 DEGREE

SURFACES 32 ✓

COURSE: DDGT 240

INVENTOR DRAWING NAME:
MACHINE VISE

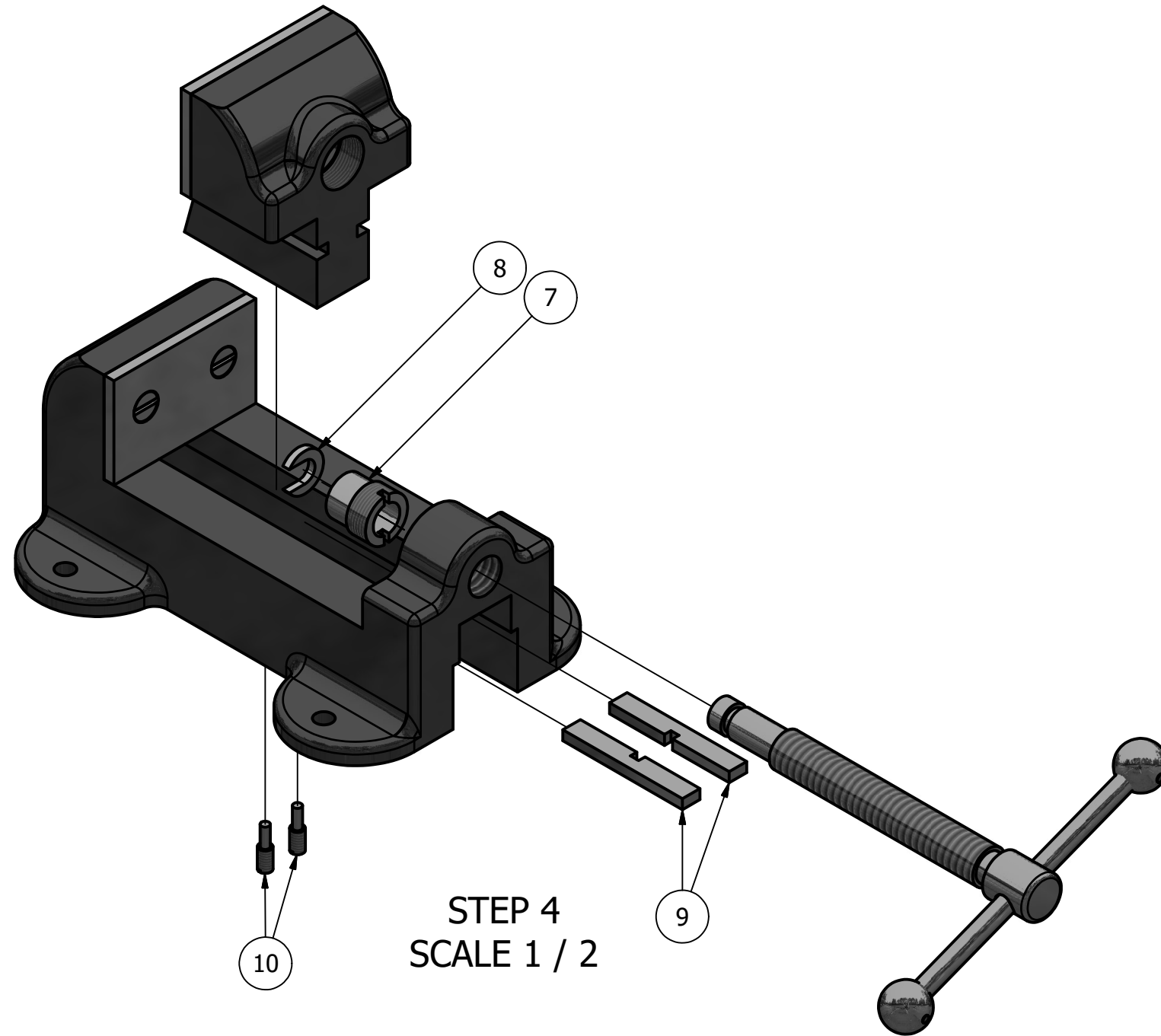
FIG #: 14-71

DRAFTER: N. EBELING

DATE: 10/1/2020

SCALE: AS NOTED

PAGE #: 2 OF 5



PARTS LIST		
ITEM	QTY	PART NUMBER
1	1	BASE
2	1	SLIDING JAW
3	2	JAW PLATE
4	1	WISE SCREW
5	1	HANDLE ROD
6	2	HANDLE BALL
7	1	COLLAR
8	1	SPECIAL KEY
9	2	SLIDE KEY
10	2	SET SCREW
11	4	FLAT HEAD MACHINE SCREW
12	2	TAPER PIN

LEGEND:

- ∅ DIAMETER
- R RADIUS
- ° DEGREES
- COUNTERBORE
- ∨ COUNTERSINK
- ∇ DEPTH



DIGITAL DESIGN
GRAPHICS
TECHNOLOGY

WWW.DDGT.NET



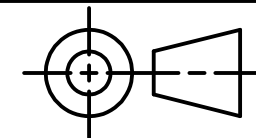
Ebeling Engineering

Nicholas Ebeling
Drafter

707-333-7096

n.b.ebeling@gmail.com

www.ddgt.net/StudentPages/nebeling



TOLERANCES UNLESS SPECIFIED:

DECIMAL INCHES:

X = ±.020

XX = ±.010

XXX = ±.005

FRACTIONAL ±1/64"

ANGLES ±1 DEGREE

SURFACES $\frac{32}{\checkmark}$

COURSE: DDGT 240

INVENTOR DRAWING NAME:
MACHINE VISE

FIG #: 14-71

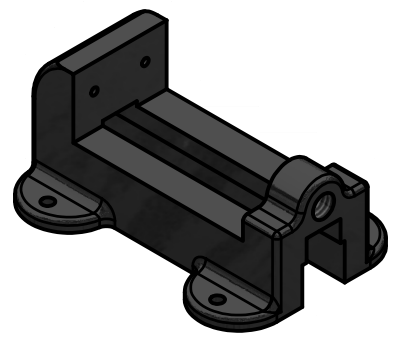
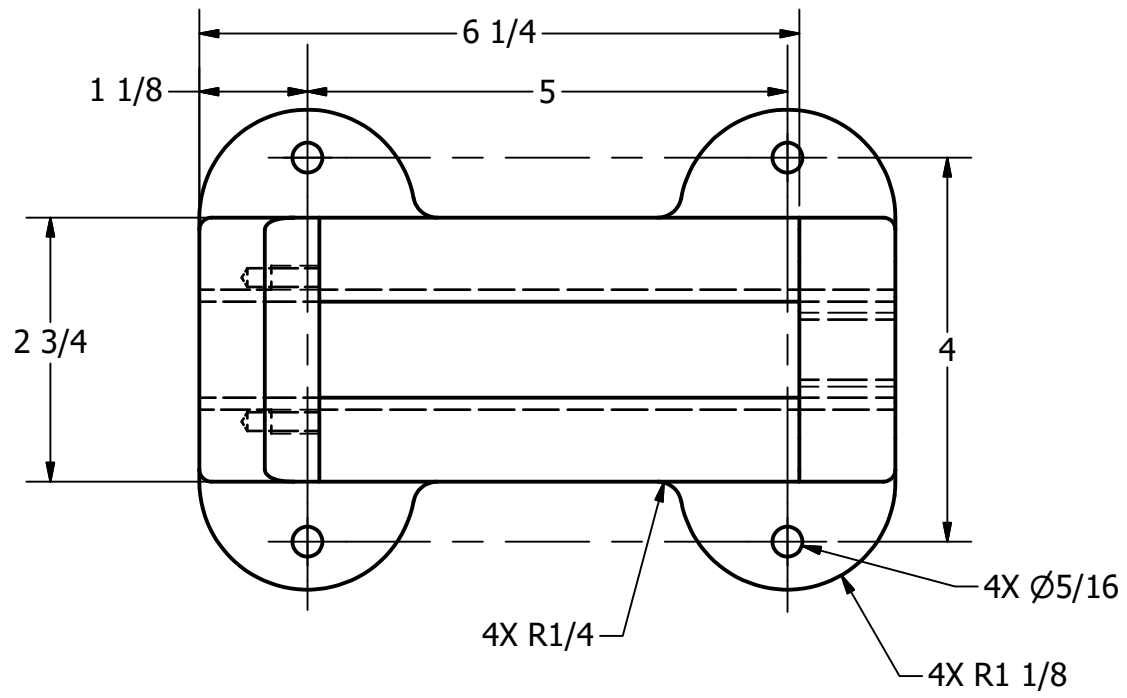
DRAFTER: N. EBELING

DATE: 10/1/2020

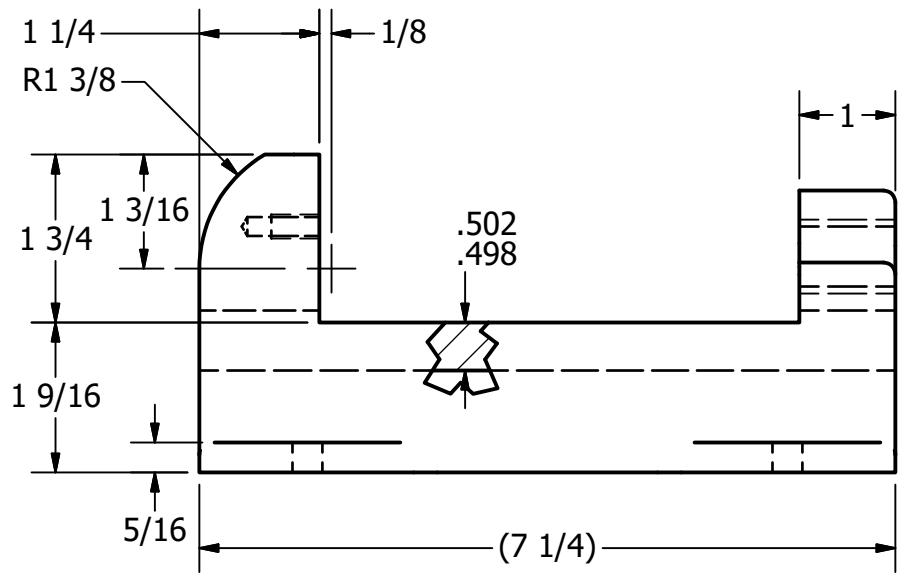
SCALE: AS NOTED

PAGE #: 3 OF 5

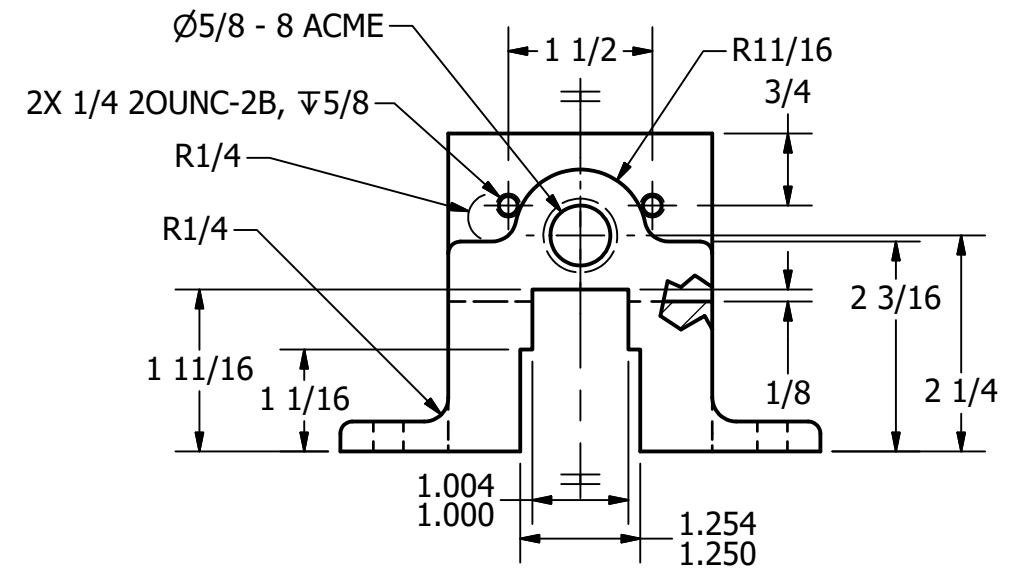
PARTS LIST		
ITEM	QTY	PART NUMBER
1	1	BASE
3	2	JAW PLATE
7	1	COLLAR
8	1	SPECIAL KEY



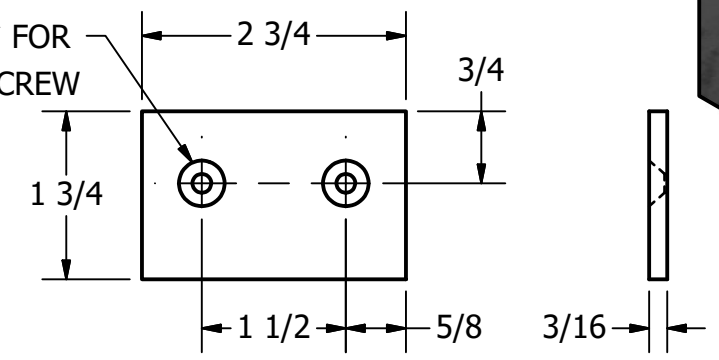
BASE ISO
SCALE 1 / 4



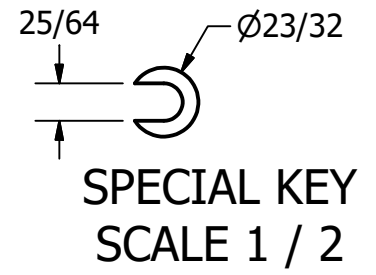
BASE
SCALE 1 / 2



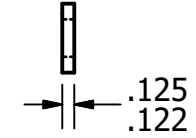
2X √ FOR
1/4 FLAT HEAD MACHINE SCREW



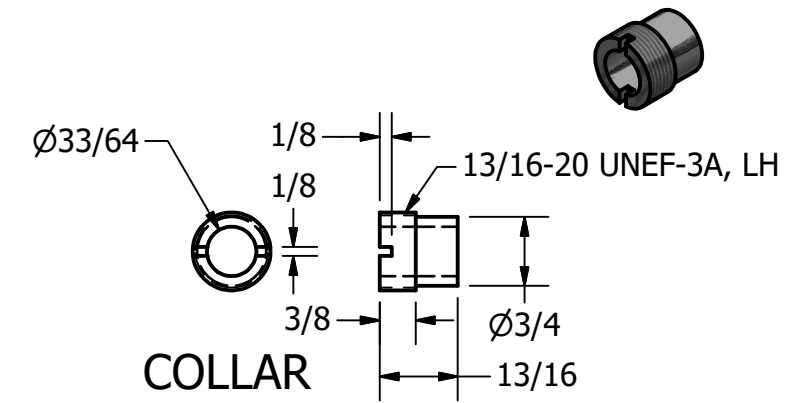
JAW PLATE
SCALE 1 / 2



SPECIAL KEY
SCALE 1 / 2



COLLAR
SCALE 1 / 2



LEGEND:

- Ø DIAMETER
- R RADIUS
- ° DEGREES
- COUNTERBORE
- √ COUNTERSINK
- ∇ DEPTH

GENERAL NOTES:

ALL FILLETS AND ROUNDS ARE 1/8, UNLESS OTHERWISE SPECIFIED



DIGITAL DESIGN
GRAPHICS
TECHNOLOGY

WWW.DDGT.NET



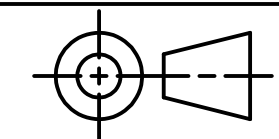
Ebeling Engineering

Nicholas Ebeling
Drafter

707-333-7096

n.b.ebeling@gmail.com

www.ddgt.net/StudentPages/nebeling



TOLERANCES UNLESS SPECIFIED:
DECIMAL INCHES:
X = ±.020
XX = ±.010
XXX = ±.005
FRACTIONAL ±1/64"
ANGLES ±1 DEGREE

SURFACES 32 √

COURSE: DDGT 240

INVENTOR DRAWING NAME:
MACHINE VISE

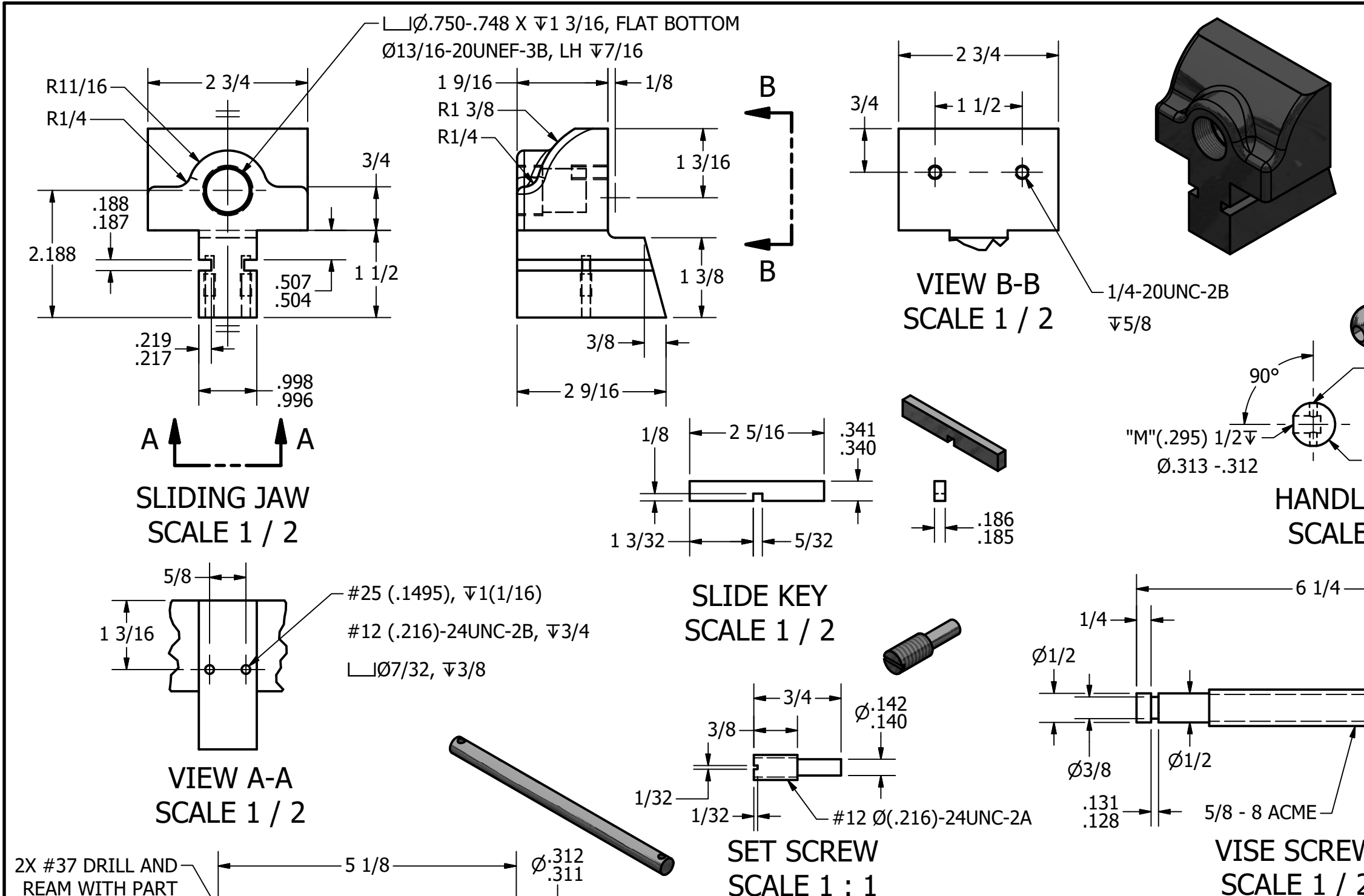
FIG #: 14-71

DRAFTER: N. EBELING

DATE: 10/1/2020

SCALE: AS NOTED

PAGE #: 4 OF 5



PARTS LIST		
ITEM	QTY	PART NUMBER
2	1	SLIDING JAW
4	1	VICE SCREW
5	1	HANDLE ROD
6	2	HANDLE BALL
9	2	SLIDE KEY
10	2	SET SCREW

- LEGEND:**
- \varnothing DIAMETER
 - R RADIUS
 - $^{\circ}$ DEGREES
 - \sqsubset COUNTERBORE
 - \sphericalangle COUNTERSINK
 - ∇ DEPTH

GENERAL NOTES:
ALL FILLETS AND ROUNDS ARE 1/8, UNLESS OTHERWISE SPECIFIED

<p>DIGITAL DESIGN GRAPHICS TECHNOLOGY</p> <p>WWW.DDGT.NET</p>	<p>Ebeling Engineering</p> <p>Nicholas Ebeling Drafter 707-333-7096 n.b.ebeling@gmail.com</p> <p>www.ddgt.net/StudentPages/nebeling</p>	<p>TOLERANCES UNLESS SPECIFIED: DECIMAL INCHES: X = ±.020 XX = ±.010 XXX = ±.005 FRACTIONAL ±1/64" ANGLES ±1 DEGREE</p> <p>SURFACES \sphericalangle</p>	<p>COURSE: DDGT 240</p> <p>INVENTOR DRAWING NAME: MACHINE VISE</p>
			<p>FIG #: 14-71</p> <p>DRAFTER: N. EBELING</p> <p>DATE: 10/1/2020</p> <p>SCALE: AS NOTED</p> <p>PAGE #: 5 OF 5</p>